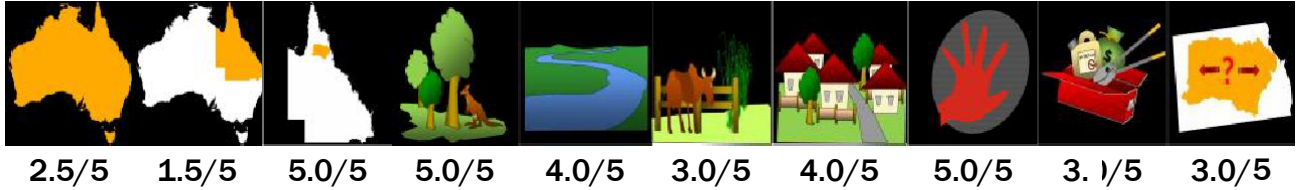


Andropogon gayanus (Gamba grass)



Priority



Details

Description: A robust, upright perennial grass that grows between 2-4 metres tall with distinctive plumed seed heads. Gamba grass forms a thick and strong tussock which remains upright even when fully cured in the dry season.

Distribution: Gamba grass was promoted and planted as a tropical pasture species up until its declaration as a weed. It is now present on and around a variety of grazing properties throughout Cape York where it is still valued as a pasture and hay species. A targeted management program has concentrated efforts on the removal of outlier infestations along the road network. Major infestation areas which remain are located near Weipa, Coen, Poison Creek, and Silver Plains. Persistent smaller infestations occur at Lakeland and the Annan River.

Impacts: Gamba grass was planted as a tropical pasture but has escaped from intensively managed grazing systems and outcompetes native pastures and fuels intense fires. Late season Gamba fires are very difficult to manage and pose a significant threat to life and property.

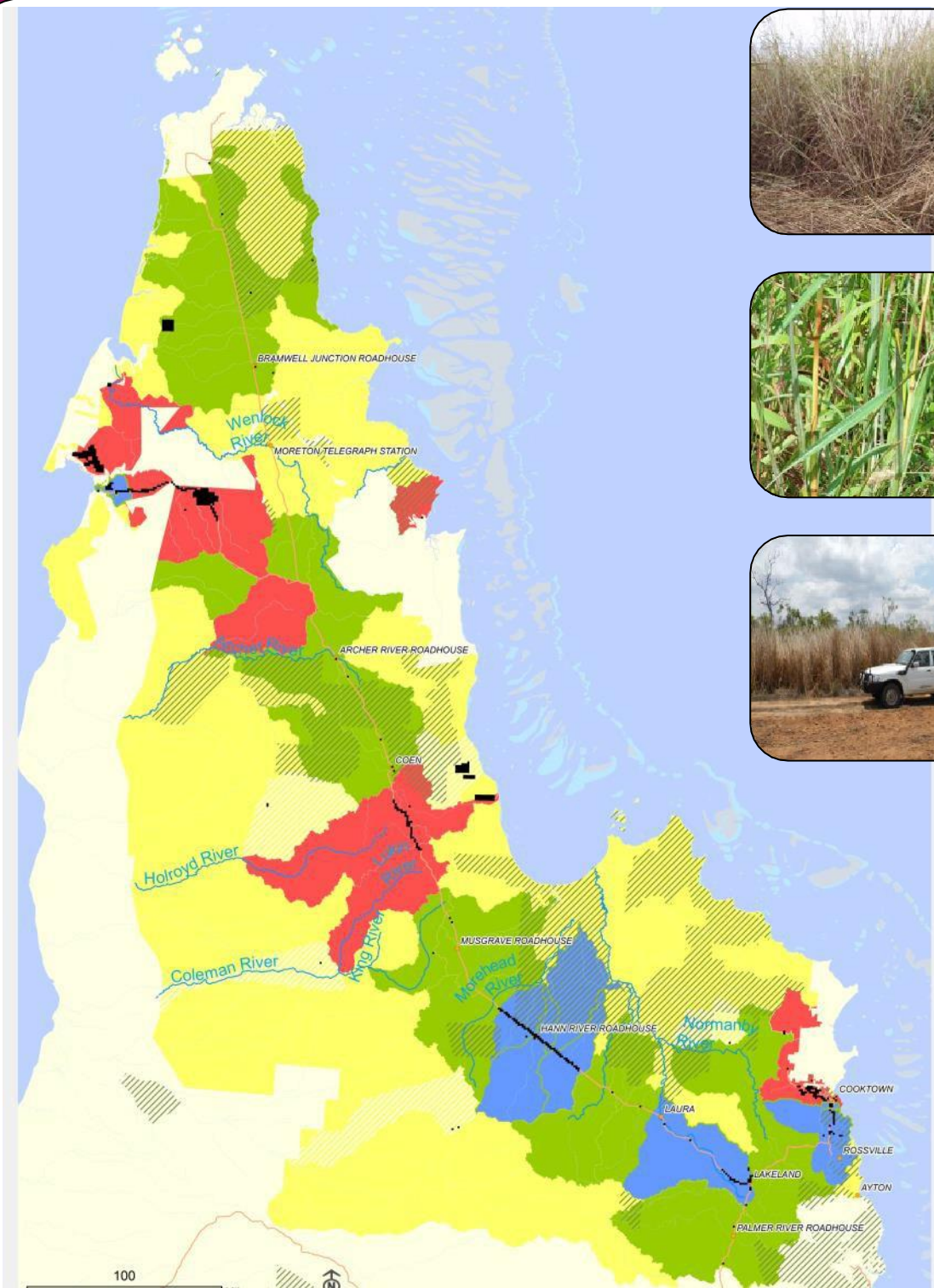
Key projects: A cross regional plan and management project is underway for gamba grass. A code of practice for containing gamba grass to grazing enterprises is in development.

Management requirements

Delimitation	Survey is required to establish the distribution of Gamba grass in Alice, Pretender, Stewart and Breakfast catchment areas .
Prevention	Spread via vehicles and contaminated hay needs to be addressed. Hay from clean sources should be sought to prevent accidental introduction. Roadsides should be monitored in growing season to detect any new outbreaks. Outside of the Cook Shire area major infestations are located north of the Jardine River and in the Hann Tablelands near Mareeba.
Eradication	Monitoring and follow up work is required to finalise current eradication objectives. Annual survey and rapid response to new incursions will be required to ensure the seedbank is eliminated from these management areas.
Intensive control	Outlier infestations and recent introductions on roadsides are subject to an intensive control program to remove risk of establishment of dense infestations in the future.
Asset protection	Containment of planted sources and maintenance of buffers on access roads can reduce the spread and impact of Gamba grass. Ensure adequate stocking rates and fencing strategies to prevent seeding and rank growth. A code of practice for containing gamba grass to grazing enterprises is in development.

Control Calendar

flower	○	◐	●	◑	○							
seed				◐	●	●	◐	○	○			
spray	●	●	●	◐	○							
Mechanical	●	●	◐	○	⊗	⊗	⊗	⊗	○	◐	◐	◐
manual	◐	◐	◐	◐	◐	◐	◐	◐	◐	◐	◐	◐
burn		○	◐	●	◑	○						
	J	F	M	A	M	J	J	A	S	O	N	D
Biology		●			●			○				⊗
Control		Optimal			Good			Marginal				Not recommended







- terrestrial
- grass
- perennial

Category

- 2
- 3
- 4
- 5
- 6

Control

- 
- 
- 
- 

Spread

- 
- 
- 

What is my biosecurity obligation?

- Delimitation zone**
- Prevention zone**
- Eradication zone**
- Intensive control**
- Asset protection**

Report any suspected outbreaks or detections to Cook Shire Council on 07 4069 5444. Ensure any machinery or vehicles moving from the infested areas are free from plant material and soil. Do not cart, introduce or transport contaminated hay or silage.

Ensure best practice weed hygiene measures are in place to reduce risk of spread to new locations. Maintain weed free areas. Assist in annual survey operations, control isolated plants before they seed.

The Biosecurity Act requires landholders must act to prevent the spread of Gamba grass from their property and that it cannot be sold, spread or moved.

For more information on management aims in each zone refer to *Using the pest plan templates*