

How much water is your household using?

From the source to the tap, being waterwise starts with YOU.

Be a water detective and find out how much water you are using in your household, and where, by doing a water audit. This can help you find ways to be waterwise and help identify any leaks in your home.



Shower

- ★★ = 12 litres per minute
- ★★★ = 9 litres per minute
- ★★★★ = 7.5 litres per minute
- ★★★★★ = 6 litres per minute



Washing machine*

- ★★★ = 103 litres per wash
- ★★★★ = 72 litres per wash
- ★★★★★ = 50 litres per wash
- ★★★★★★ = 35.5 litres per wash

*Based on a washing machine with a 7 kg load capacity on a normal or eco cycle.



Tap

- ★★ = 0.2 litres per second
- ★★★ = 0.15 litres per second
- ★★★★ = 0.125 litres per second
- ★★★★★ = 0.1 litres per second
- ★★★★★★ = 0.075 litres per second



Dishwasher**

- ★★ = 18 litres per wash
- ★★★ = 15 litres per wash
- ★★★★ = 12 litres per wash
- ★★★★★ = 10 litres per wash
- ★★★★★★ = 8.5 litres per wash

**Based on a dishwasher with a 12 place setting capacity.



Toilet

- ★★ = 4.5 litres per half flush or 9.5 litres per full flush
- ★★★ = 3.5 litres per half flush or 6.5 litres per full flush
- ★★★★ = 3.2 litres per half flush or 4.7 litres per full flush
- ★★★★★ = 3.0 litres for an average flush

Water audit tally sheet

Find out how much water is used in your household

Daily activities			Use in a day (tally of flushes or time)	Total use in a day (A)	Water usage (B) (per flush, second/minute)*	Water use = (A) x (B) (litres)
Bathroom	Toilet (number of flushes)	Half flush				
		Full flush				
	Shower (in minutes)					
	Taps (in seconds)	Washing hands				
		Cleaning teeth				
		Shaving				
		Bath				
		Other				
Kitchen	Taps (in seconds)	Washing hands				
		Drinking				
		Food prep & cooking				
		Hand washing dishes				
		Other				

Total water use for daily activities (litres) (C)

Weekly activities						
			Use in a week <i>(tally of washes or time)</i>	Total use in a week (D)	Water usage (E) <i>(per wash, second/minute) *</i>	Water use = (D) x (E) (litres)
Kitchen						
	Dishwasher <i>(number of washes)</i>					
Laundry	Taps <i>(in seconds)</i>	Washing hands				
		Soaking & hand washing clothes				
	Washing machine <i>(number of washes)</i>					
General	Taps <i>(in seconds)</i>	Household cleaning				
		Washing pets				
		Watering indoor plants				
		Other				

Total water use for weekly activities (litres) (F)

Average daily use for weekly activities = (F) ÷ 7 (litres) (G)

Total daily household water use = (C) + (G) (litres per day)

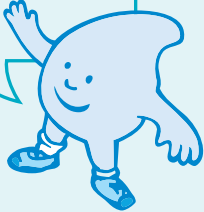
*Water usage based on star ratings can be found over the page.

How to use the water audit tally sheet

1. Tally or estimate the use in a day or week for each activity.
2. Determine water usage based on the star rating of each device (or refer to bucket method below).
3. For each device do the following calculation: 'Total use' x 'water usage' = 'water use'.

Whizzy's waterwise tip:

To find out how much each person uses, simply divide the daily household water use by the number of people in your house.



Calculating a star rating

If you don't know the star rating of your tap, you can test it by timing how long it takes to fill a 9-litre bucket with water:

Less than 1 minute = ★★★★★
1 minute = ★★★
Longer than 1 minute = ★★

Check your work!

Check your water meter before you start the day and then check again the following morning. You can then work out how much your meter has recorded your household using. If it is very different to what was calculated, it could mean you have a leak.

